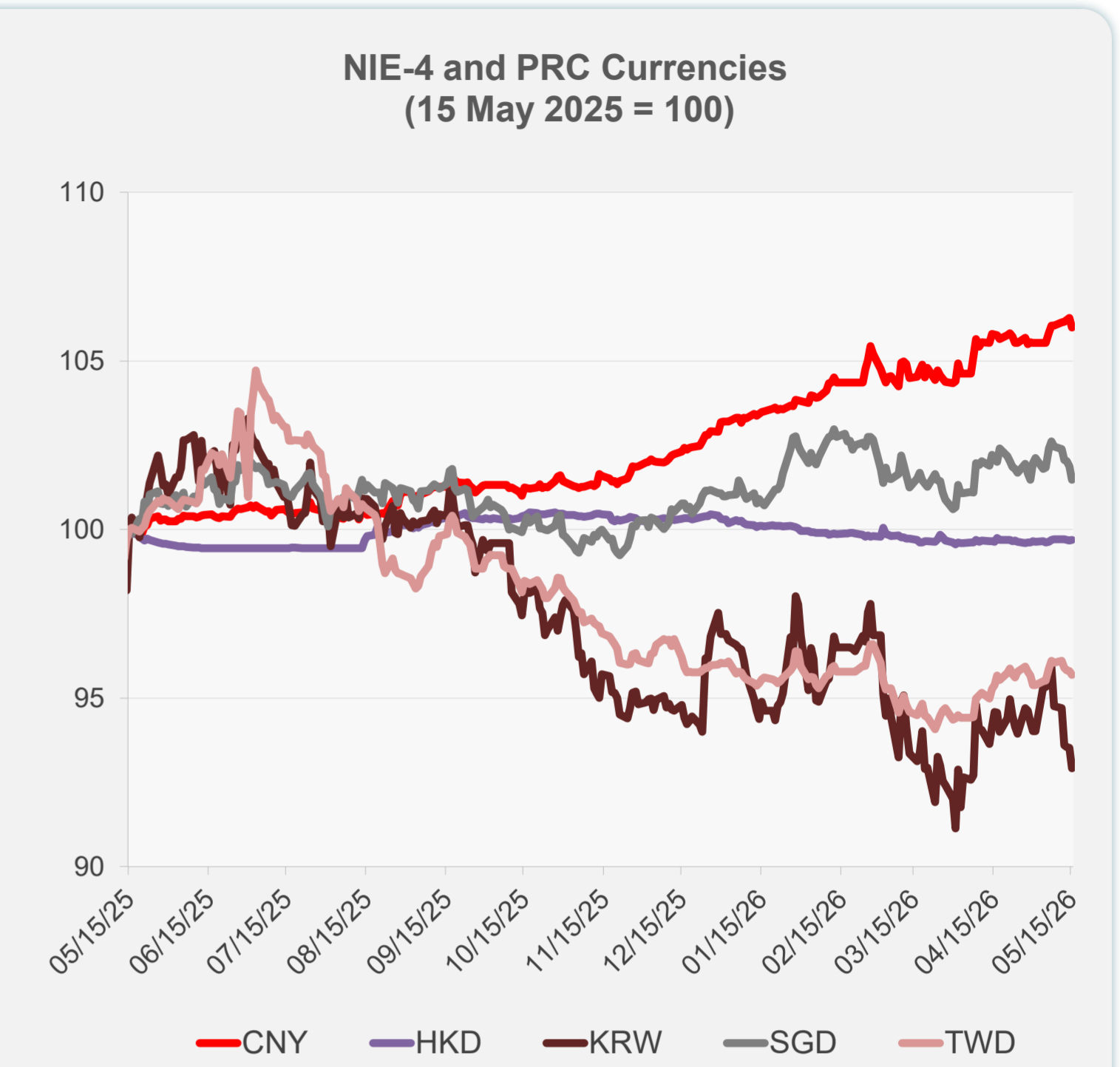
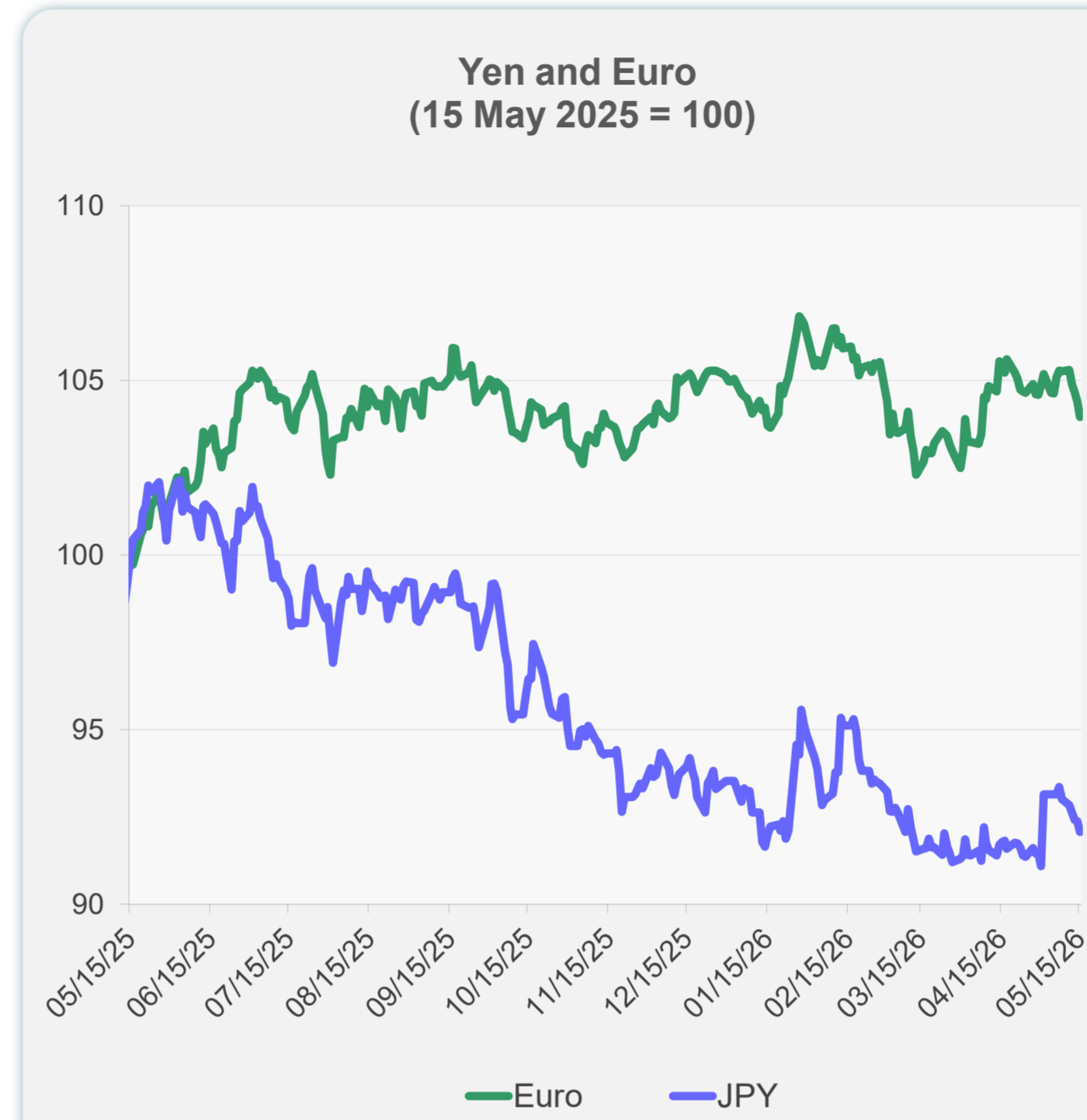
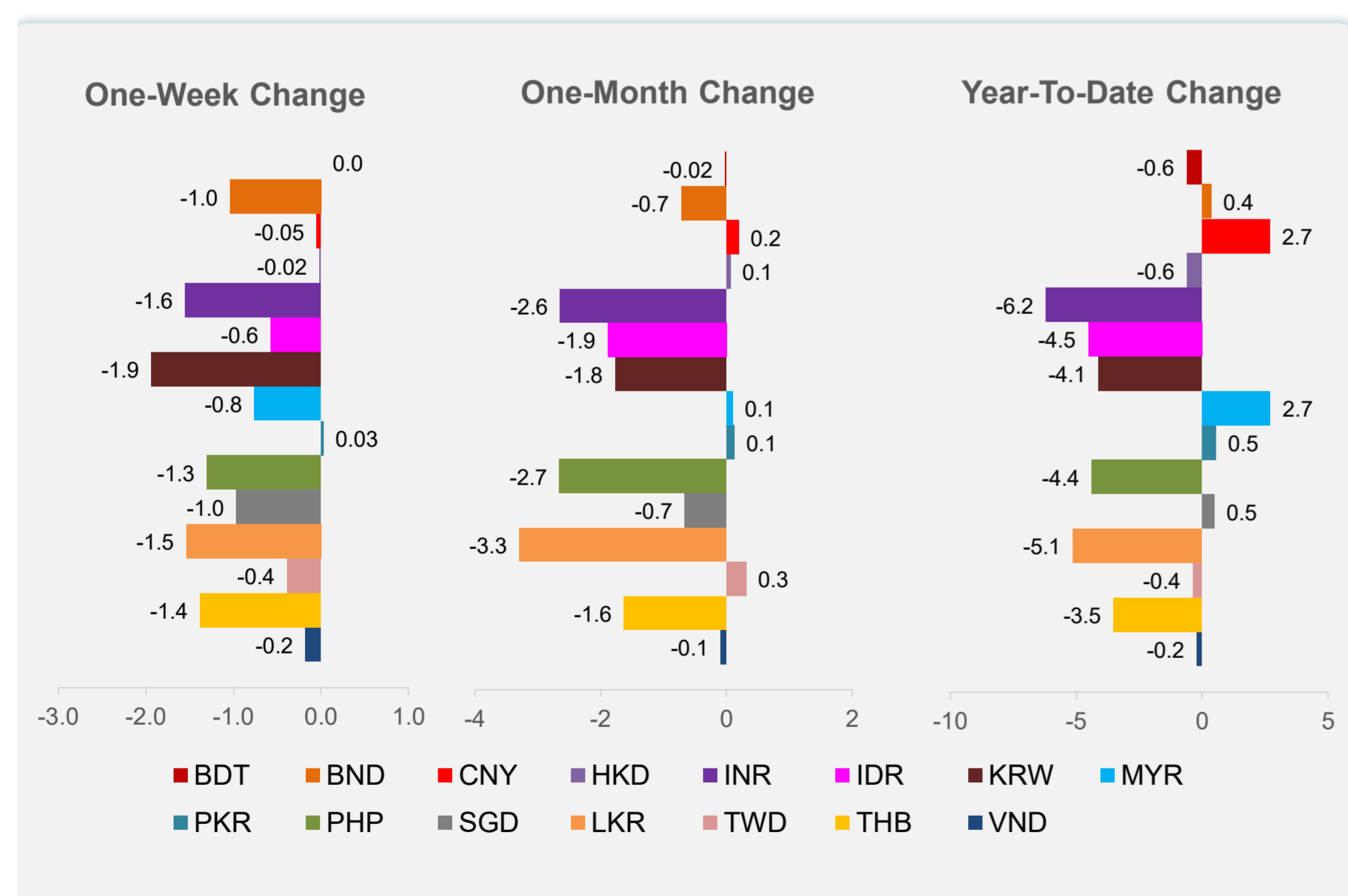
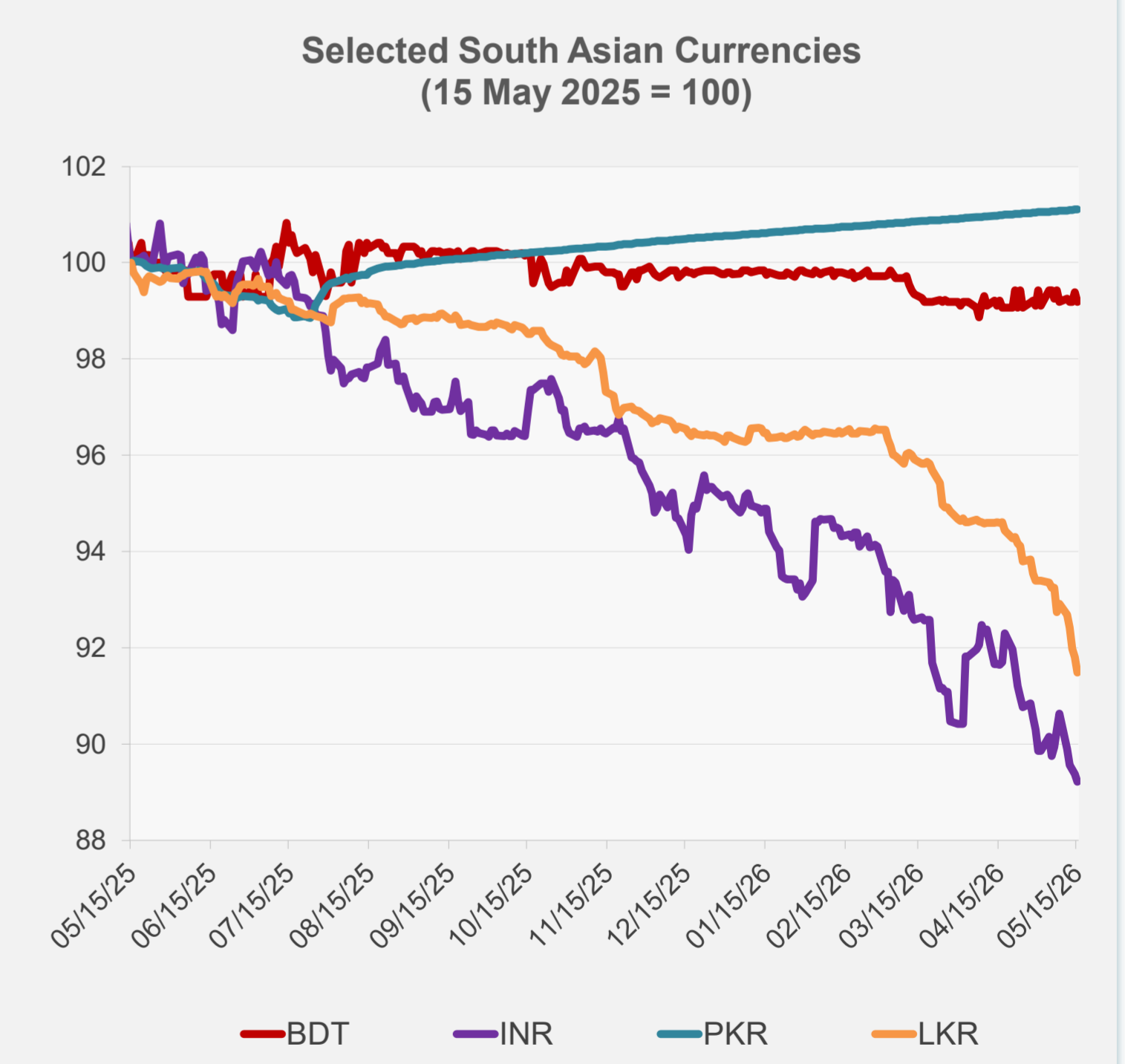
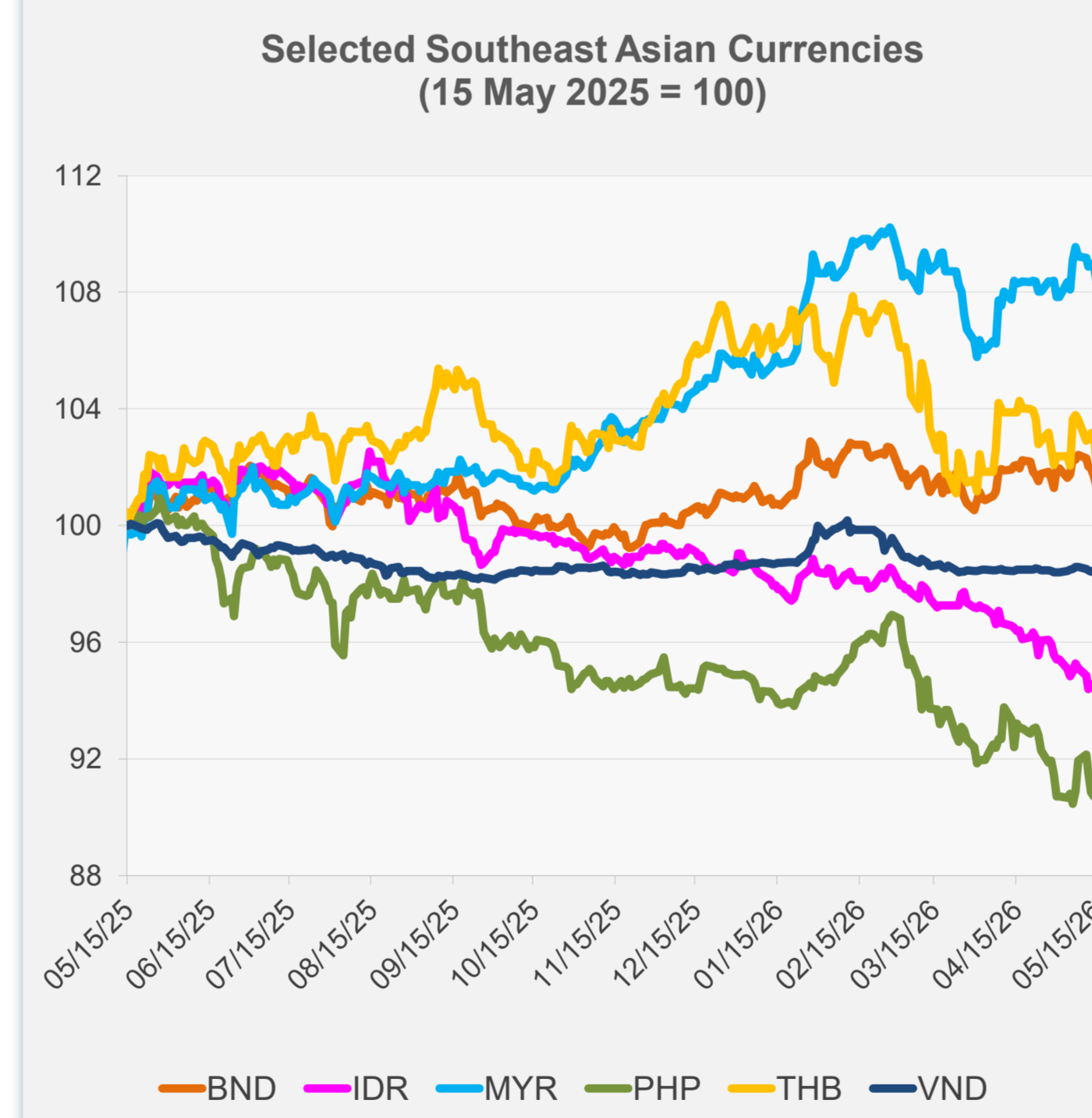


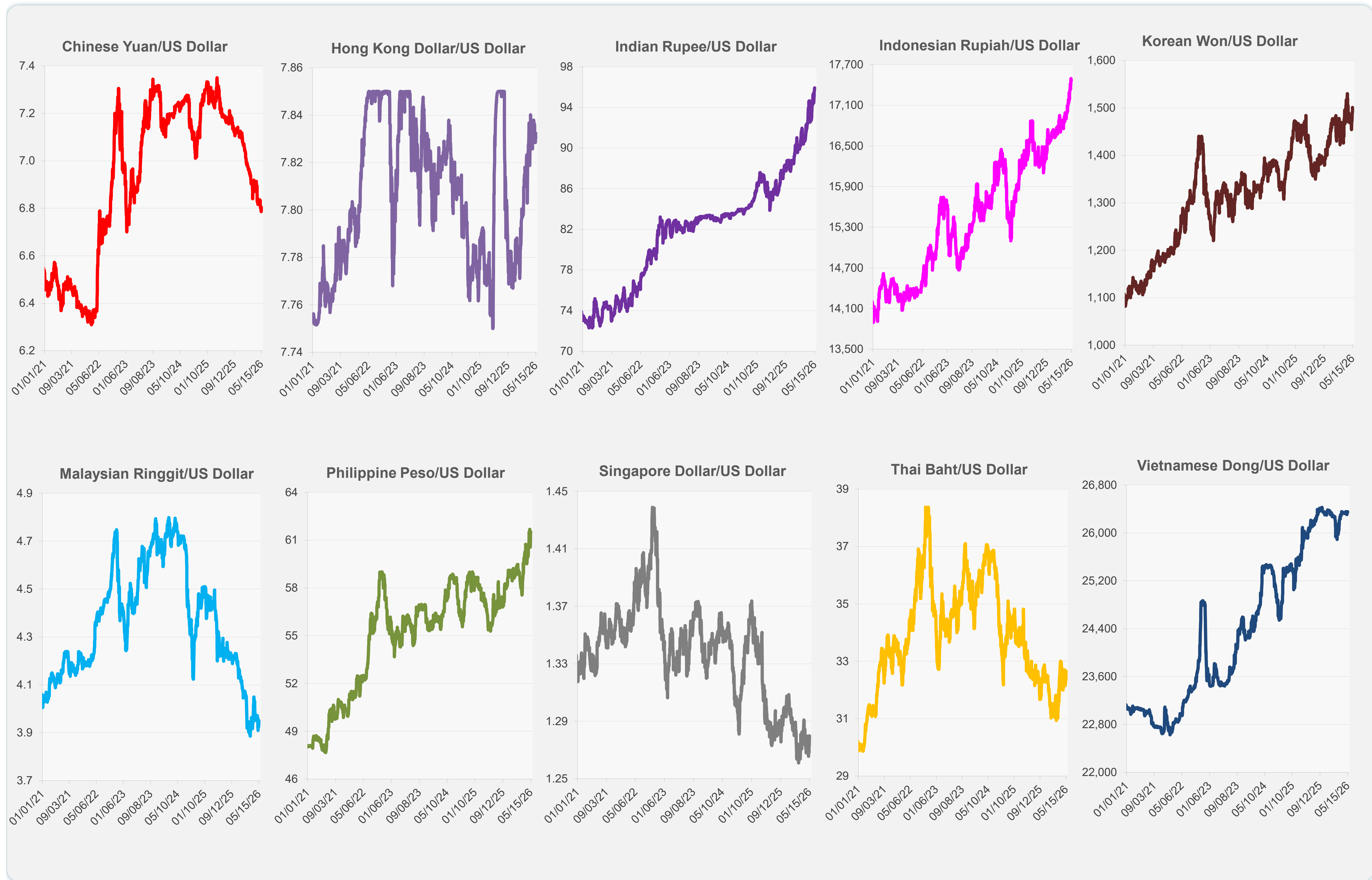
	Latest Closing	% change from Previous Day	% change from 01-Jan-26
Euro	0.86	-0.43	-0.98
Japanese yen (JPY)	158.45	-0.33	-1.56
Bangladeshi taka (BDT)	123.00	-0.20	-0.61
Brunei dollar (BND)	1.28	-0.35	0.35
Chinese yuan (CNY)	6.80	-0.27	2.69
Hong Kong dollar (HKD)	7.83	0.03	-0.59
Indian rupee (INR)	95.93	-0.18	-6.20
Indonesian rupiah (IDR)	17,465.00	0.00	-4.52
Korean won (KRW)	1,500.80	-0.65	-4.12
Malaysian ringgit (MYR)	3.95	-0.49	2.71
Pakistan rupee (PKR)	278.59	0.00	0.54
Philippine peso (PHP)	61.49	0.03	-4.37
Singapore dollar (SGD)	1.28	-0.40	0.48
Sri Lanka rupee (LKR)	326.30	-0.36	-5.12
Taipei,China NT dollar (TWD)	31.55	-0.13	-0.36
Thai baht (THB)	32.66	-0.97	-3.52
Vietnamese dong (VND)	26,355.00	-0.04	-0.21



NIE = Newly Industrialized Economies

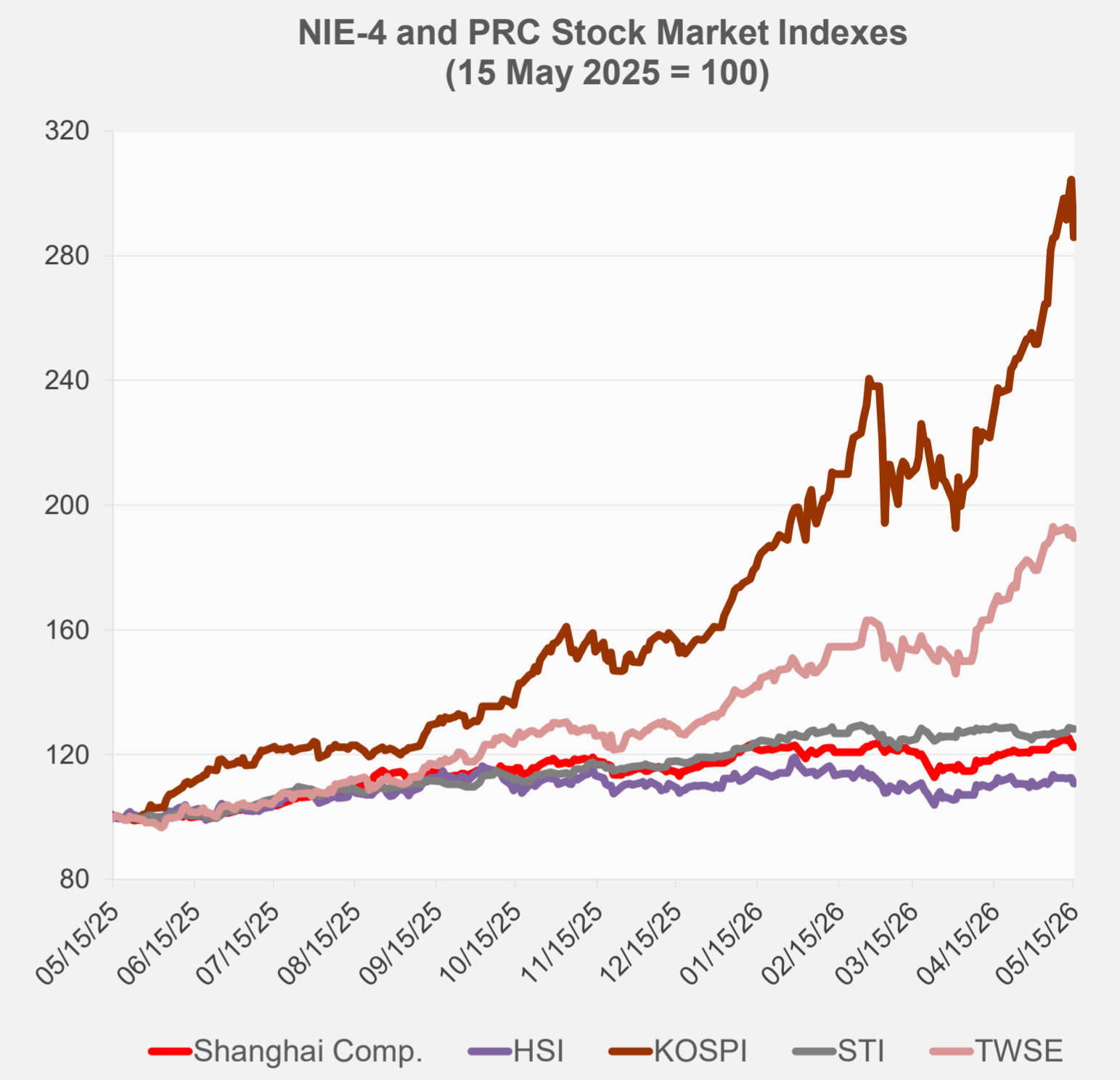
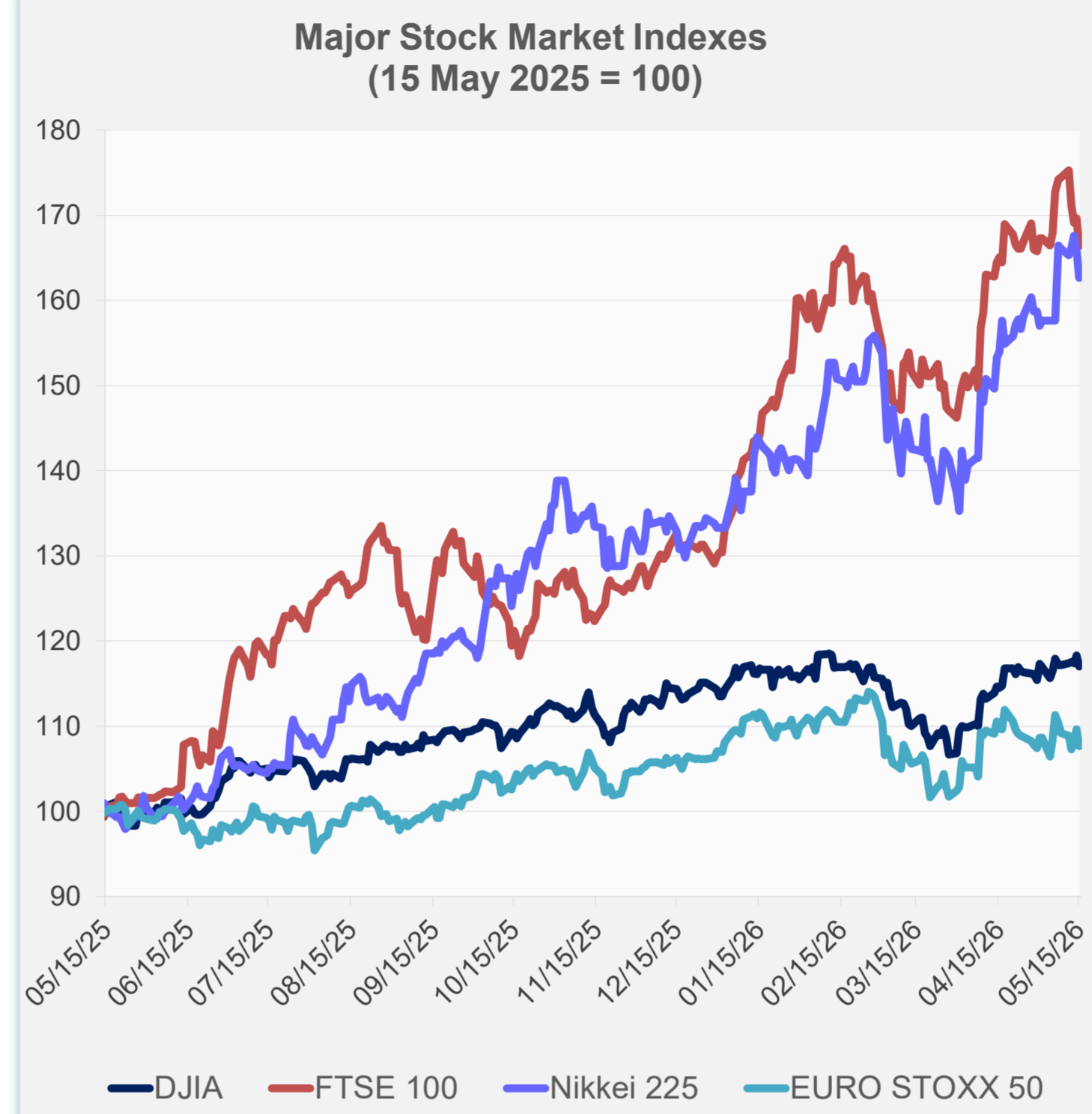


Note: Negative/Decreasing values indicate depreciation of local currency, and positive/increasing values indicate appreciation.  
Source: ADB calculations using data from Bloomberg and Haver Analytics.

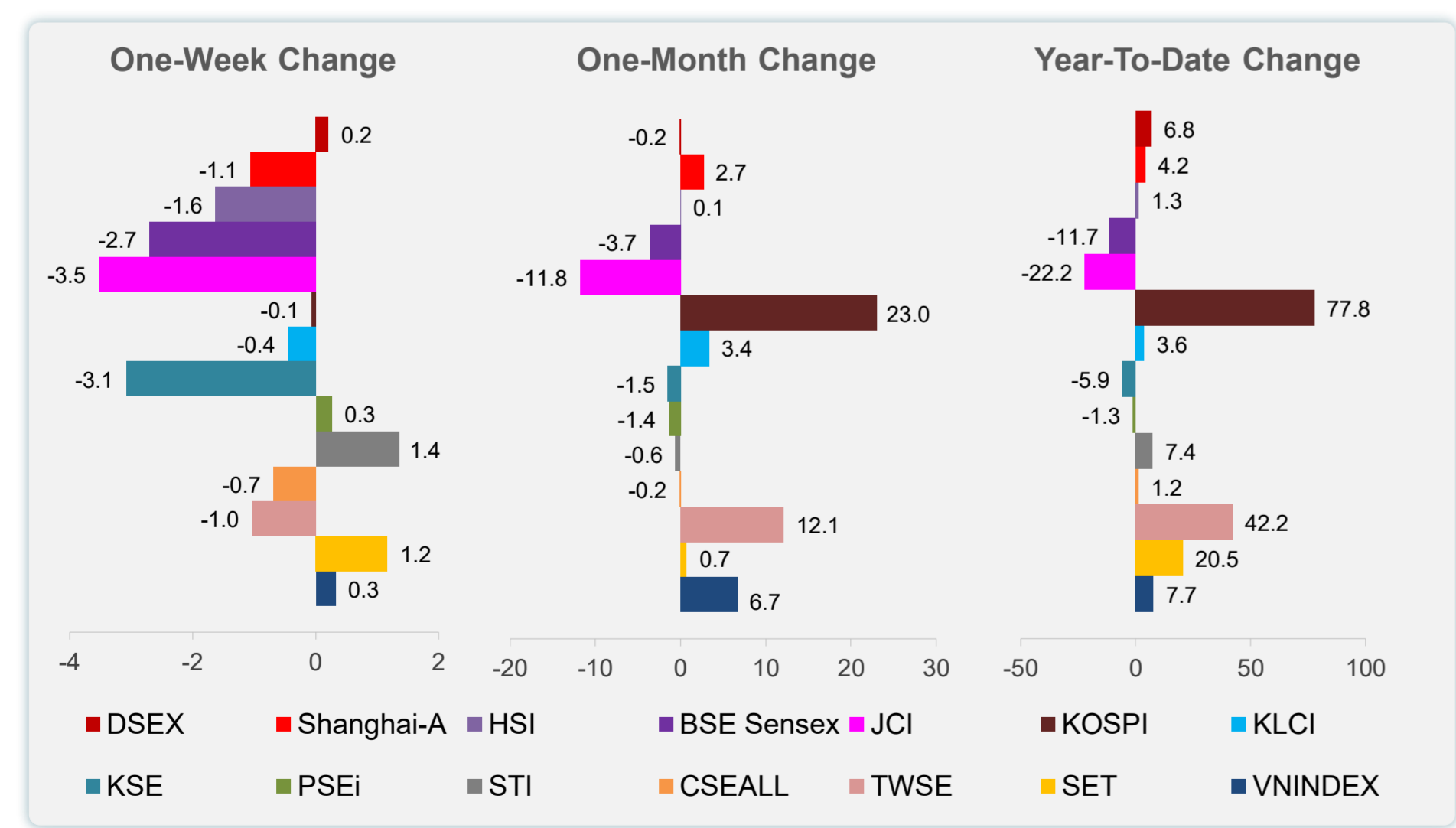
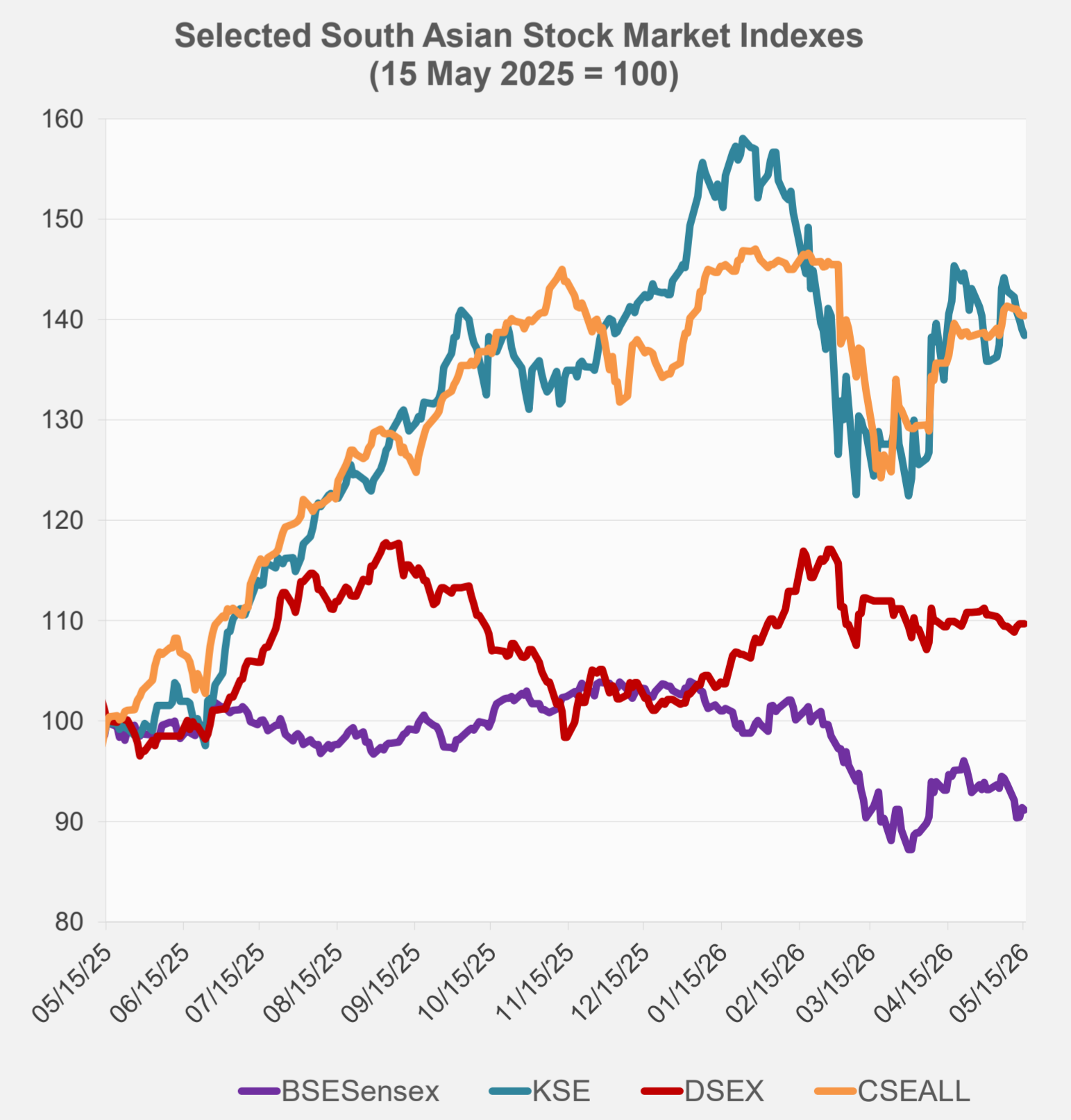
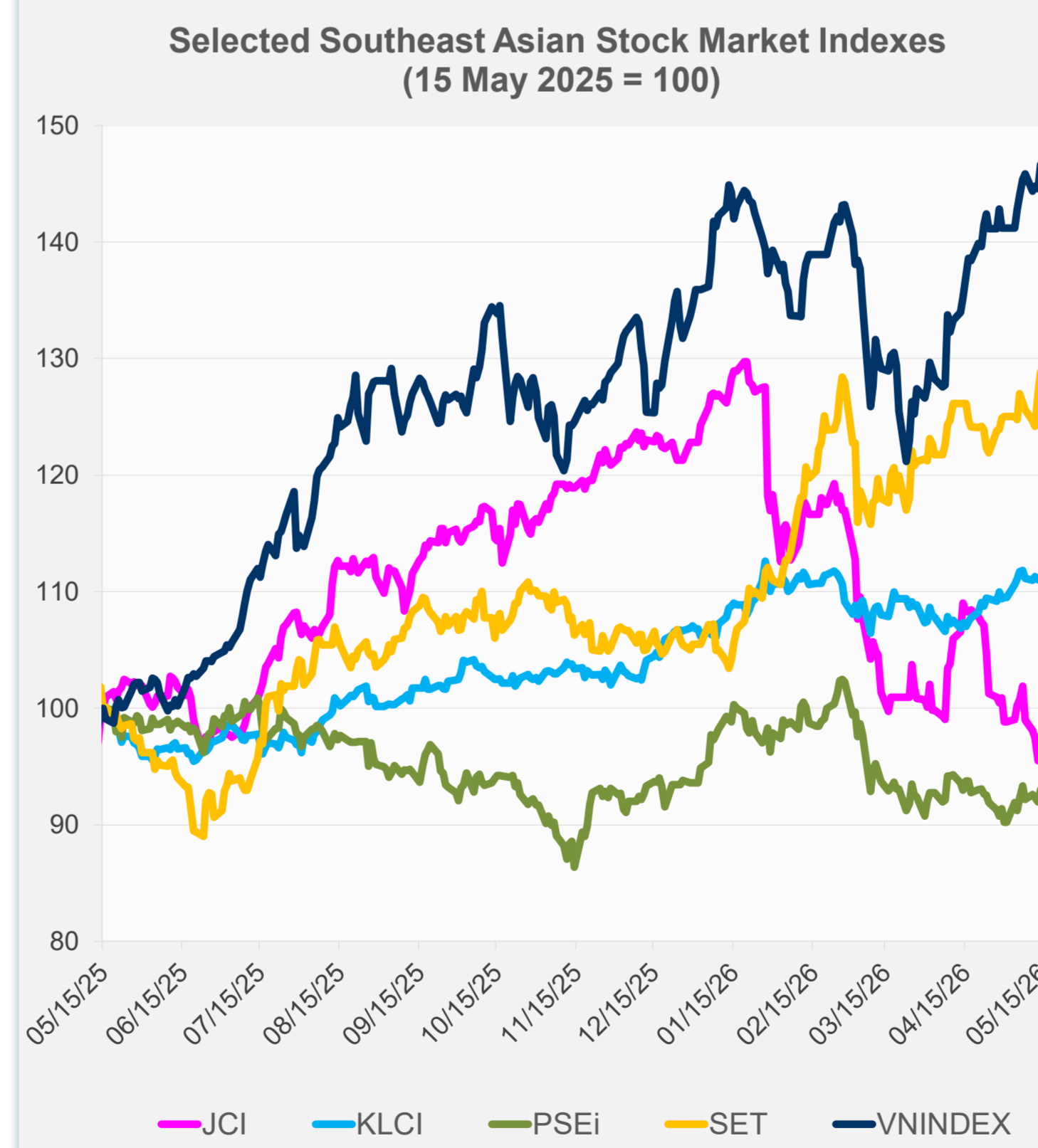


Source: Haver Analytics.

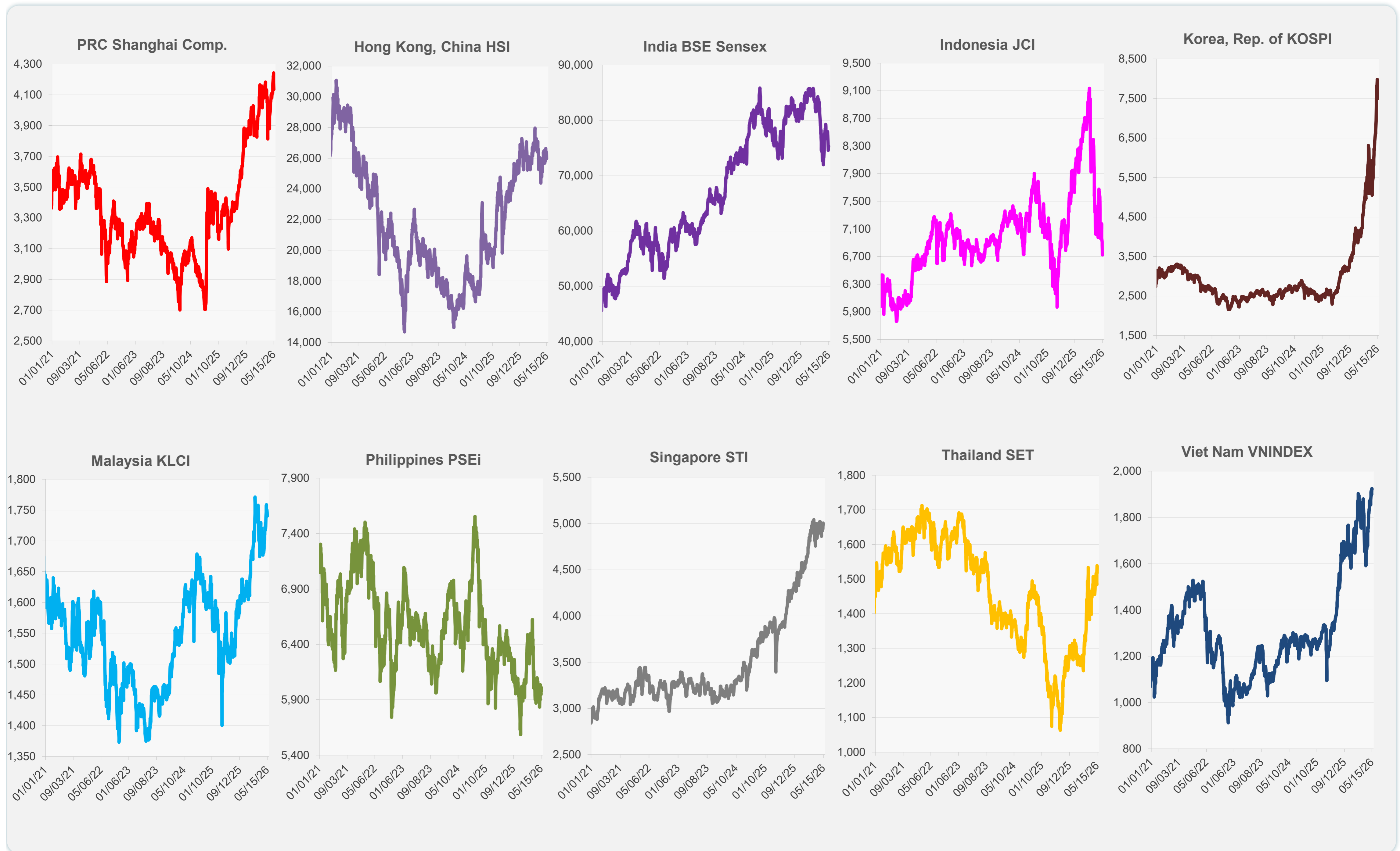
	Latest Closing	% change from Previous Day	% change from 01-Jan-26
US Dow Jones Ind Avg	49,526.17	-1.07	3.04
US NASDAQ	26,225.14	-1.54	12.84
US S&P 500	7,408.50	-1.24	8.22
UK FTSE 100	14,367.60	-1.89	27.58
EURO STOXX 50	5,827.76	-1.81	0.63
Japan NIKKEI 225	61,409.29	-1.99	21.99
Bangladesh DSEX	5,245.22	0.00	6.81
PRC Shanghai Comp.	4,135.39	-1.02	4.20
Hong Kong, China HSI	25,962.73	-1.62	1.30
India BSE Sensex	75,237.99	-0.21	-11.68
Indonesia JCI	6,723.32	0.00	-22.25
Korea, Rep. of KOSPI	7,493.18	-6.12	77.81
Malaysia KLCI	1,740.22	-0.31	3.58
Pakistan KSE 100	166,073.50	-0.39	-5.89
Philippines PSEi	5,976.77	-0.64	-1.26
Singapore STI	4,989.08	-0.14	7.38
Sri Lanka CSEALL	22,905.75	0.03	1.24
Taipei, China TWSE	41,172.36	-1.39	42.15
Thailand SET	1,517.95	-1.38	20.50
Viet Nam VNINDEX	1,921.60	-0.20	7.68



NIE = Newly Industrialized Economies



Sources: ADB calculations using data from Bloomberg and CEIC Data Company.



Sources: ADB calculations using data from Bloomberg and CEIC Data Company.

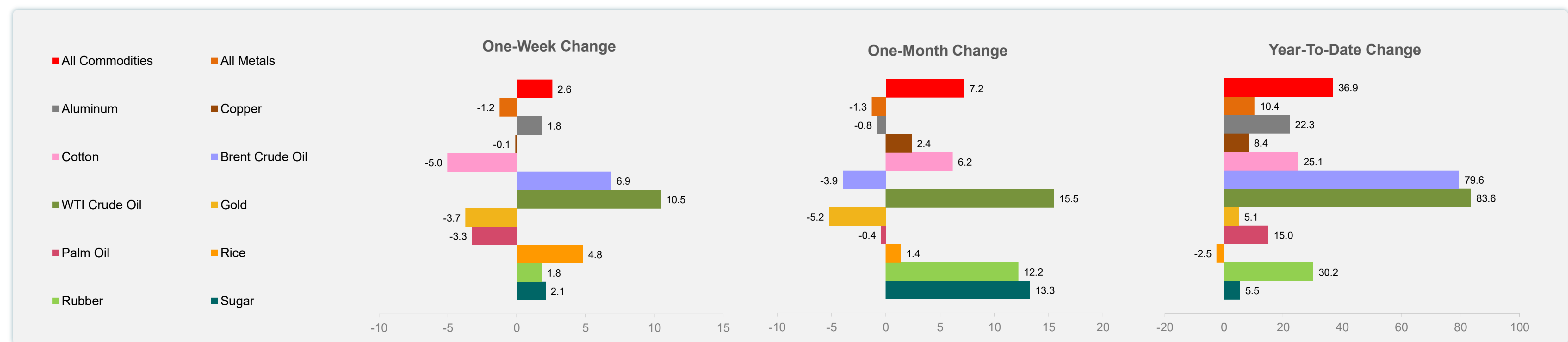
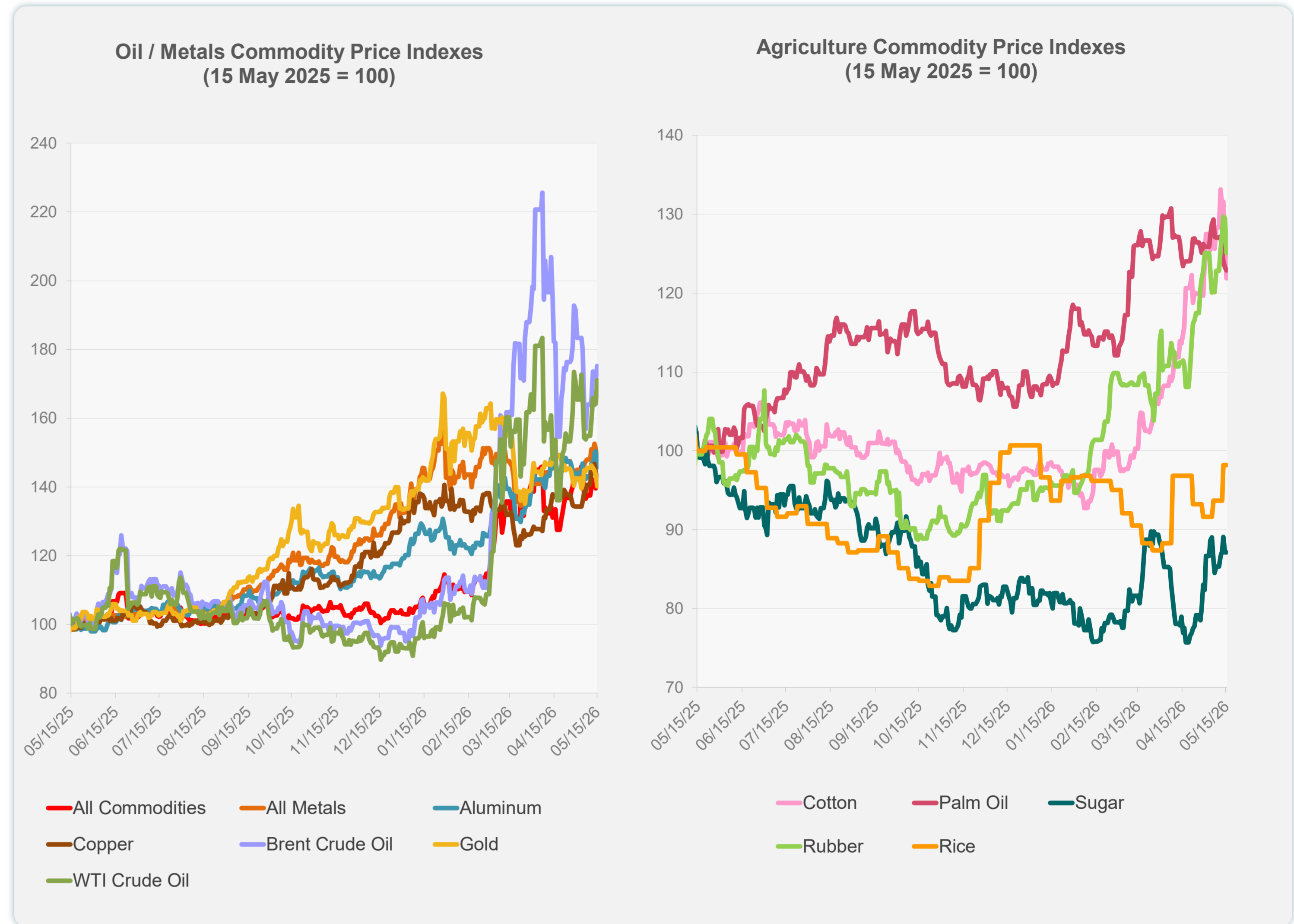
Daily Market Watch  
**COMMODITY PRICES**

18 May 2026, 9:00 AM Manila

	Unit	Latest Closing	% change from Previous Day	% change from 01-Jan-26
S&P All Commodities	US\$	751.16	1.07	36.94
S&P All Metals	US\$	489.86	-3.30	10.39
Aluminum	US\$/metric ton	3,628.41	-3.02	22.25
Copper	US\$/metric ton	13,503.11	-2.82	8.43
Cotton	US cents/lb	77.61	-4.11	25.14
Brent Crude Oil	US\$/barrel	112.15	2.36	79.59
WTI Crude Oil	US\$/barrel	105.42	4.20	83.59
Gold	US\$/troy oz	4,540.08	-2.41	5.11
Palm Oil	US\$/metric tonne	1,113.99	-0.33	15.00
Rice <sup>1</sup>	US\$/metric ton	435.00	0.00	-2.47
Rubber <sup>2</sup>	US\$/kg	280.00	-3.41	30.23
Sugar	US cents/lb	15.60	0.00	5.48

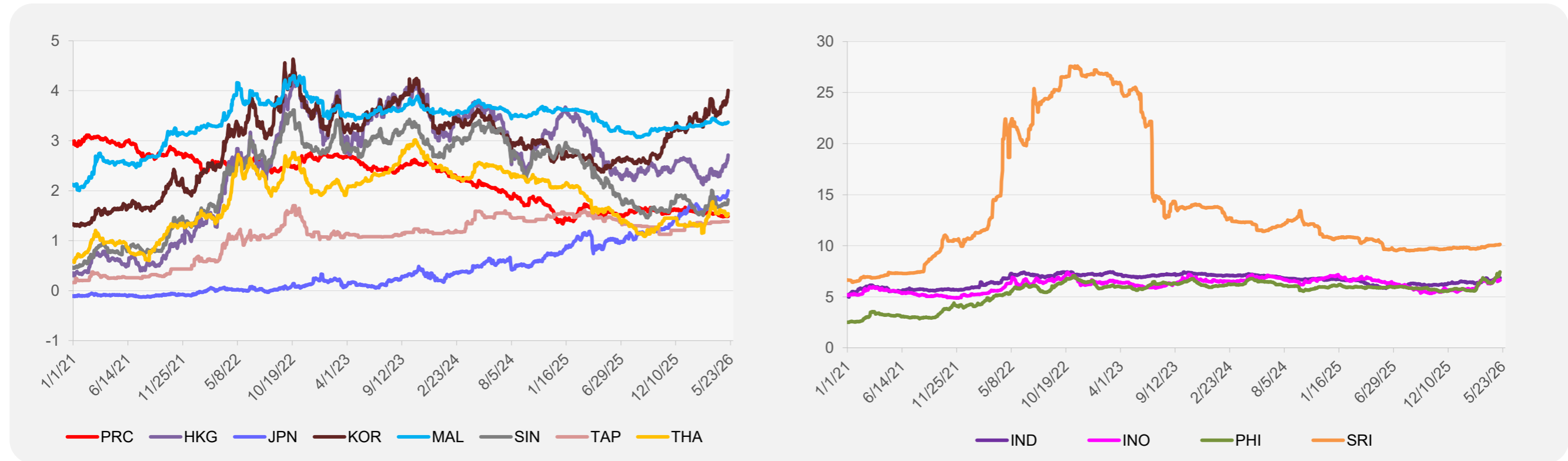
<sup>1</sup> Latest closing price from 13 May 2026.

<sup>2</sup> Singapore Exchange, Ribbed Smoked Sheet Rubber.

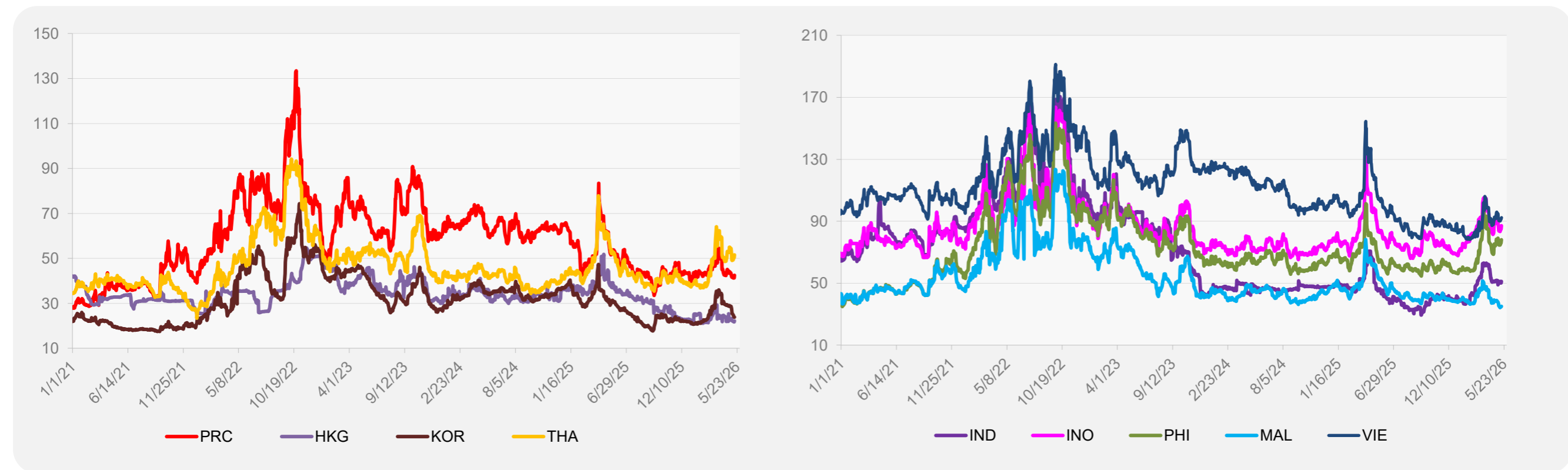


Source: ADB calculations using data from Bloomberg.

### 5-YEAR LOCAL CURRENCY GOVERNMENT BOND YIELDS (%)



### 5-YEAR CREDIT DEFAULT SWAP<sup>1</sup>



<sup>1</sup> In USD and based on sovereign bonds.  
Source: ADB calculations using data from Bloomberg.